

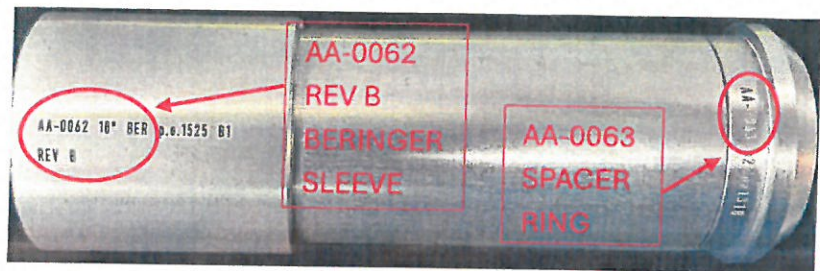


ACME AERO

COMPATIBILITY SERVICE ANNOUNCEMENT

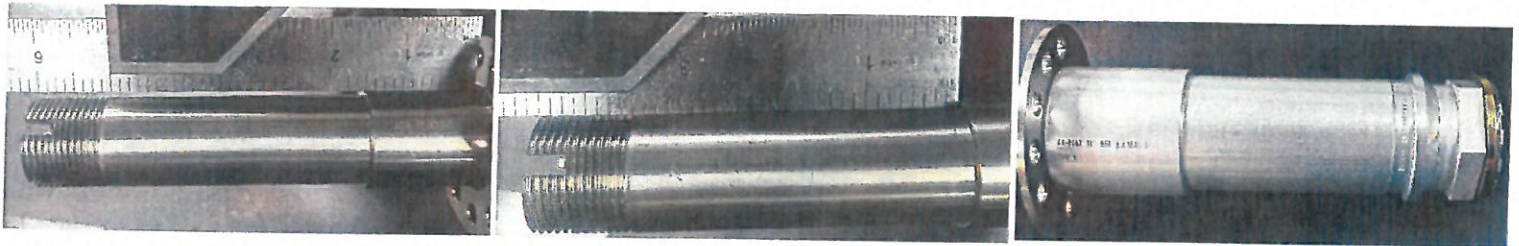
Affected Products: Gear Legs

When using Acme Aero Gear Legs (titanium or chromoly) in conjunction with Beringer Aero 10" wheel and brake packages Acme Aero part number **AA-0062 REV B** and **AA-0063** **MUST** be installed.



These parts can be identified by the part marking on the outside of the wider diameter of the Beringer Sleeve, and below the flange of the spacer ring. As shown on the image above, The Beringer Sleeve part number and revision letter is **AA-0062 REV B**, and the spacer ring part number is **AA-0063**.

Before installing the Acme Aero 10" Beringer sleeve, use a straight edge on the axle to ensure the axle is straight and not bent, this is especially important if a different type of sleeve has been used with the Acme Aero Gear Legs. See the pictures below for reference as well as an image of the fully assembled sleeve on an axle.



We apologize for any inconvenience. Please contact us if you have any questions.

704-496-9022